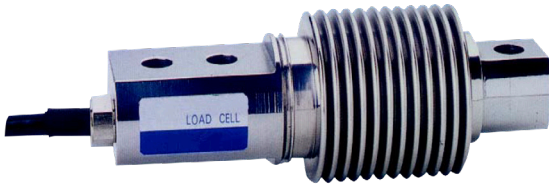


BENDING BEAM LOAD CELL

Rated Load 10 - 200 kg



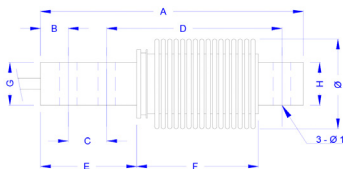
automation and engineering



NGX

SPECIFICATION

• Sensitivity	mV/V	2 +/- 0.1
• Non-linearity	%FS	+/- 0.02
• Hysteresis	%FS	+/- 0.02
• Repeatability	%FS	+/- 0.015
• Creep	%FS/30 min	+/- 0.03
• Zero Balance	mV/V	+/- 0.02
• Zero Temperature Drift	%FS/10°C	+/- 0.02
• Rated Output Temperature Drift	%FS/10°C	+/- 0.02
• Input Resistance	Ω	400 +/- 25
• Output Resistance	Ω	350 +/- 2
• Insulation Resistance	G Ω	≥ 5
• Supply Voltage	Vac/dc	5+10 max 15
• Compensated Temperature Range	°C	-10 ÷ +40
• Operating Temperature Range	°C	-15 ÷ +70
• Safe Overload	%FS	150
• Cable	mm	6x0,14 - L 5000
• Material		Stainless steel
• Cable Color Code		Input: Red (+), Blue (-) Output: Yellow (+), Green (-) Ref: White (+), Black (-)
• Sealing		IP67 - Welded



Load (Kg)	Size mm									
	A	B	C	D	E	F	G	H	Ø	Ø1
10										
20										
50	120	10	18	82	38	60	20	20	47	8,3
100										
200										



automation and engineering

27020 Travacò Siccomario
Via del Tovo 5/3 Pavia Italy

Tel. +39 0382 482657
Fax +39 0382 1850248

commerciale@logic-pavia.it
www.logic-pavia.it

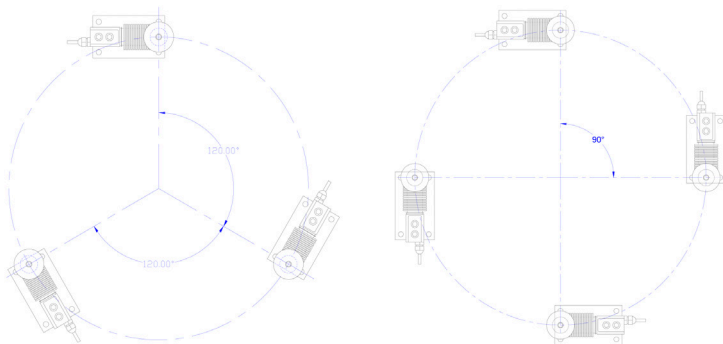
BENDING BEAM LOAD CELL

Rated Load 10 - 200 kg

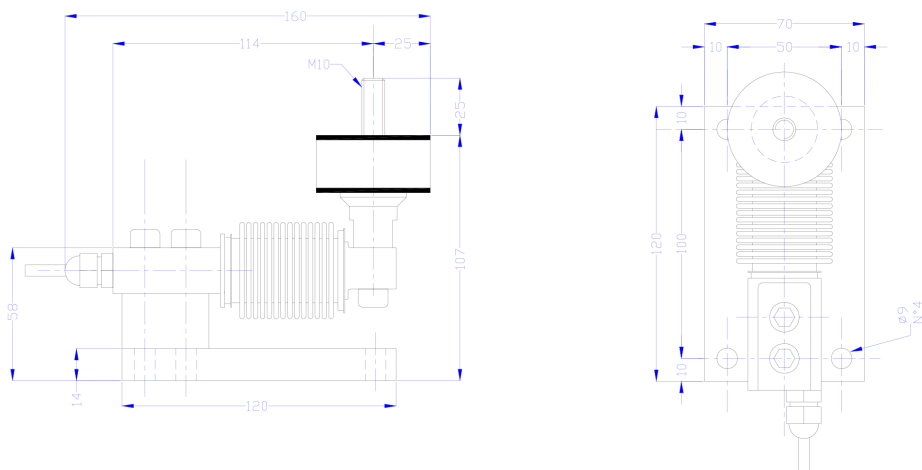


automation and engineering

TREE AND FOUR LOAD CELL ARRAGEMENT



MOUNTING FOOT MOD. MK-SR 200



automation and engineering

27020 Travacò Siccomario
Via del Tovo 5/3 Pavia Italy

Tel. +39 0382 482657
Fax +39 0382 1850248

commerciale@logic-pavia.it
www.logic-pavia.it