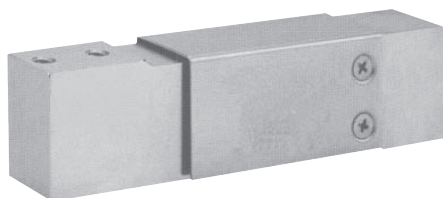


SINGLE POINT LOAD CELL

Rated Load 5 ÷ 100 kg



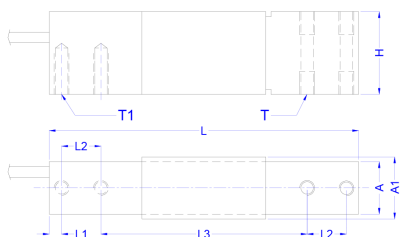
automation and engineering



PE-2A

SPECIFICATION

• Sensitivity	mV/V	2 +/- 0.02
• Non-linearity	%FS	+/- 0.02
• Hysteresis	%FS	+/- 0.02
• Repeatability	%FS	+/- 0.01
• Creep	%FS/30 min	+/- 0.02
• Zero Balance	%FS	+/- 1
• Zero Temperature Drift	%FS/10°C	+/- 0.02
• Rated Output Temperature Drift	%FS/10°C	+/- 0.02
• Input Resistance	Ω	410 +/- 10
• Output Resistance	Ω	350 +/- 3
• Insulation Resistance	M Ω	\geq 5000
• Supply Voltage	Vac/dc	10 max 15
• Compensated Temperature Range	°C	-10 ÷ +50
• Operating Temperature Range	°C	-20 ÷ +60
• Safe Overload	%FS	120
• Cable	mm	\varnothing 5 - L 5000
• Material		Aluminum / Stainless steel
• Cable Color Code		Input: Red (+), Black (-) Output: Green (+), White (-)
• Sealing		IP65 - Resin Potted



Load (Kg)	Size mm							
	A	A1	L	L1	L2	L3	H	T - T1
5 ÷ 100	254	30	150	6	19	100	40	M6X1



automation and engineering

27020 Travacò Siccomario
Via del Tovo 5/3 Pavia Italy

Tel. +39 0382 482657
Fax +39 0382 1850248

commerciale@logic-pavia.it
www.logic-pavia.it