

BRIDGE LOAD CELL

Rated Load 100 klbs



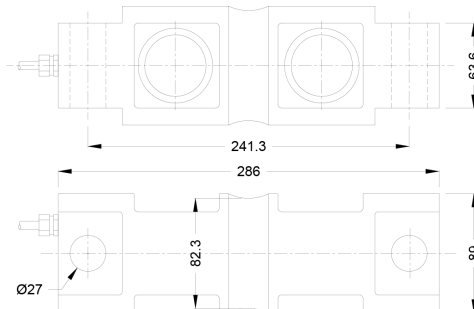
automation and engineering



QSC

SPECIFICATION

• Sensitivity	mV/V	3 +/- 0.003
• Total Error	%FS	+/- 0.05
• Creep	%FS/30 min	+/- 0.02
• Zero Balance	%FS	+/- 1
• Zero Temperature Drift	%FS/10°C	+/- 0.02
• Rated Output Temperature Drift	%FS/10°C	+/- 0.02
• Input Resistance	Ω	750 +/- 10
• Output Resistance	Ω	702 +/- 3
• Insulation Resistance	MΩ	≥ 5000
• Supply Voltage	Vac/dc	1 max 15
• Compensated Temperature Range	°C	-10 ÷ +50
• Operating Temperature Range	°C	-30 ÷ +70
• Safe Overload	%FS	150
• Ultimate Load	%FS	300
• Cable	mm	ø 6 - L 7 m
• Material		Stainless steel
• Cable Color Code		Input: Red (+), Black (-) Output: Green (+), White (-)
• Sealing		IP67 - Welded
• Rated Load	Lbs	100.000



automation and engineering

27020 Travacò Siccomario
Via del Tovo 5/3 Pavia Italy

Tel. +39 0382 482657
Fax +39 0382 1850248

commerciale@logic-pavia.it
www.logic-pavia.it

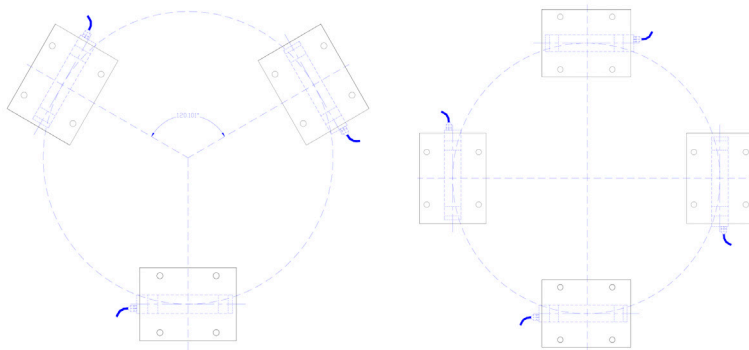
BRIDGE LOAD CELL

Rated Load 100 klbs



automation and engineering

TREE AND FOUR LOAD CELL ARRANGEMENT



MOUNTING FOOT MOD. MK-QSC 100 KLBS

